

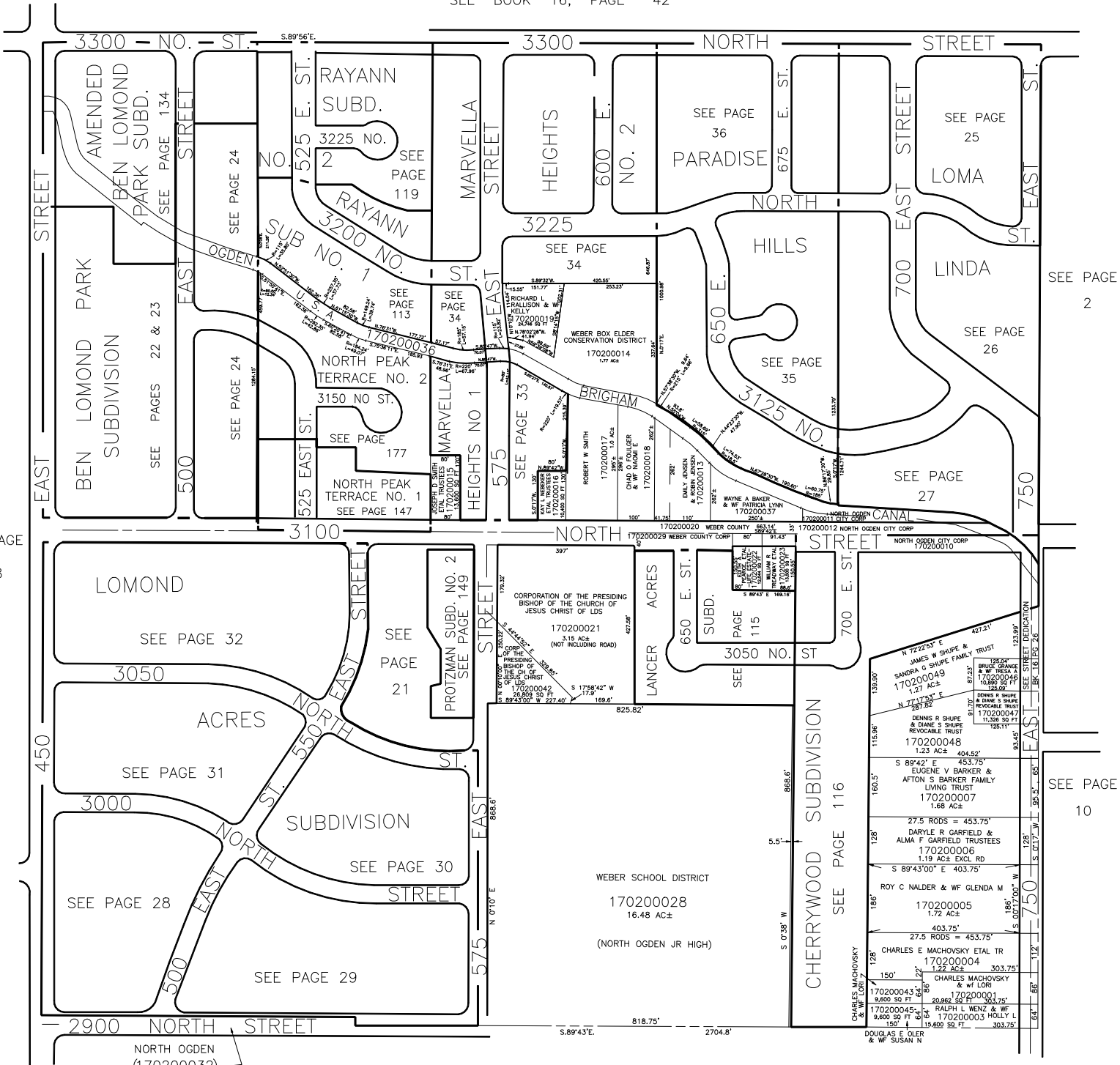
N.W. 1/4 OF SECTION 28, T.7N., R.1W., S.L.B. & M.

IN NORTH OGDEN CITY

SCALE 1" = 200'

TAXING UNIT: 10

SEE BOOK 16, PAGE 42



SEE PAGE 38

SEE PAGE 2

SEE PAGE 26

SEE PAGE 10